

Setup Guide

Setup Guide

Publication date

Table of Contents

- 1. Introduction to the Resara Server Solution 1
- 2. Using the Resara Server Virtual Machines 2
 - Resara Server for VMware 2
 - Resara Server for VirtualBox 2
- 3. Install Resara Server on Ubuntu 10.04 5
- 4. Install the Admin Console 6
 - Install on Windows 6
 - Install on Linux 6
 - Generic Install 6
 - Installing with Ubuntu 10.04 Packages 6
- 5. Troubleshooting 8

Chapter 1. Introduction to the Resara Server Solution

Resara server consists of two parts: The server operating system, and the Admin Console you use to configure and manage your Resara Server. This setup guide explains how you can download Resara Server as a virtual machine, or install it on your existing Ubuntu 10.04 operating system. The guide also explains how to download and install the Admin Console on your computer. Additional information about configuring your Resara Server can be found in the documentation section of our website.

Chapter 2. Using the Resara Server Virtual Machines

Resara provides pre-built VM images for VMware and in an open format used by VirtualBox and other virtualization products.

System Requirements

Make sure you have at least 5GB's of free space on your hard drive for your VM. Also, the VM is configured for 512 MBs of RAM, so make sure you have enough memory available on your host machine to allocate to the VM.

Resara Server for VMware

Make sure you have a version of VMware running on your computer. There are many different of versions of VMware you can use, including their free VMware server products, and VMware Player. You can find downloads and installation instructions for VMware on their website at <http://www.vmware.com>

Step 1: Download the VMware virtual machine by going to <http://www.resara.com/index.php/downloads>, and click on the Download for VMware button in the Resara Server section. This may take some time.

Step 2: Unzip the VMware image once the file has completed downloading.

Step 3: Launch the console for VMware on your computer, and select the option for opening an existing image, which will likely be under File: Open. Then select the Resara Server .vdmk file.

Step 4: Run the image by clicking “power on” or the play icon. The server will boot up and present you with a setup wizard.

Step 5: At this point, you can either choose to configure your VM within the VM interface, or connect to it with the Admin Console installed on your computer. If you launch the Admin Console on your computer, it will automatically discover the unconfigured server on your network, and you just click the Connect button to launch the setup wizard.

For further instructions on how to configure your Resara Server, see the User Manual in the Documentation section of our website.

Resara Server for VirtualBox

VirtualBox is a free, open source virtualization program, and you can find downloads and installation instructions for it at <http://www.virtualbox.org> .

Step 1: Download the VirtualBox VM by going to <http://www.resara.com/index.php/downloads>, and click on the Download for VirtualBox button in the Resara Server section. This may take some time.

Step 2: Once the file has completed downloading, unzip the file.

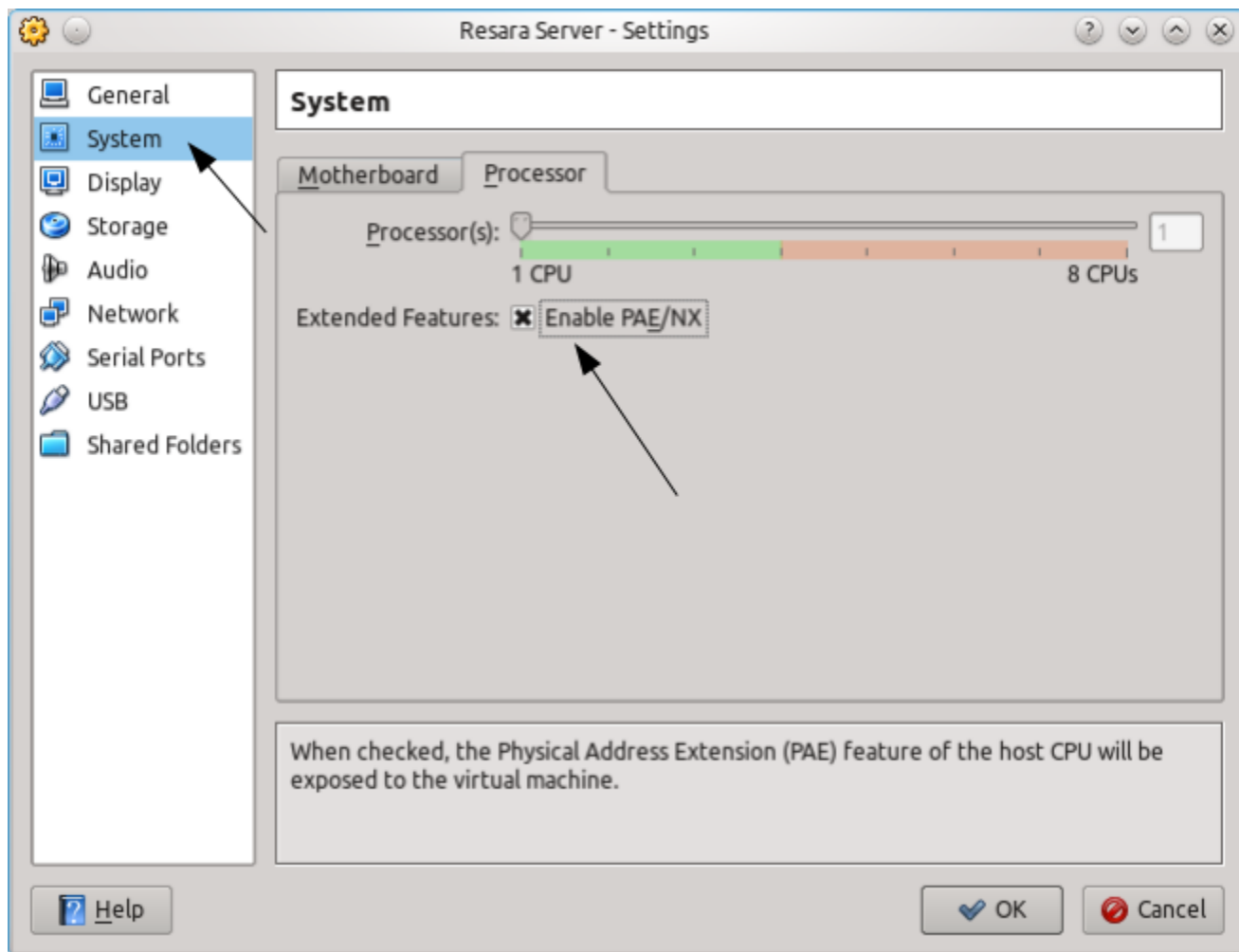
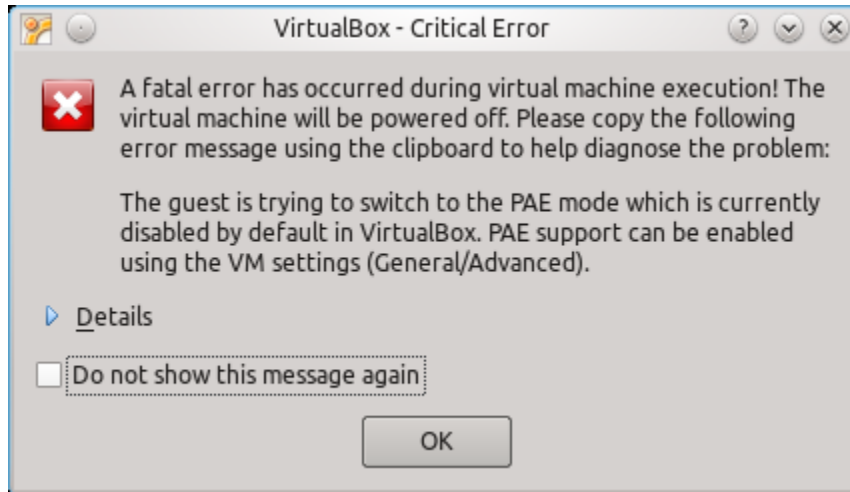
Step 3: Launch the VirtualBox console and click File: Import Appliance. You will need to click the Choose button, and locate the .ovf file you downloaded from the website. Then, you can click Next, and finish. (You can allocate more RAM or disk space if so desired).

Step 4: Power on the VM by selecting it and pushing the Start button.



Note

If you get the error that PAE mode is not enabled, power off your VM and go to the VM's Settings, and select System, then Processor, and enable PAE mode.



Step 5: At this point, you can either choose to configure your VM within the VM interface, or connect to it with the Admin Console installed on your computer. If you launch the Admin Console on your computer, it will automatically discover the unconfigured server on your network, and you just click the Connect button to launch the setup wizard.

For further instruction on how to configure your Resara Server, see the User Manual in the Documentation section of our website.

Chapter 3. Install Resara Server on Ubuntu 10.04

You can install Resara Server on your existing Ubuntu 10.04 Linux operating system by installing the Resara .deb packages.

Step 1: With a text editor, add these lines to your `/etc/apt/sources.list` file

- `deb http://packages.resara.com/rds/stable lucid main`
- `deb-src http://packages.resara.com/rds/stable lucid main`

Step 2: Then, run the following commands

- `sudo apt-key adv --keyserver keyserver.ubuntu.com --recv-keys 7BE5E6B2E7E5A4B3`
- `sudo apt-get update`
- `sudo apt-get install rds rdserver`

Step 3: Once these packages are installed, you can connect to your server by running the Admin Console on your computer or the server.

For further instructions on how to configure your Resara Server, see the User Manual in the Documentation section of our website.

Chapter 4. Install the Admin Console

The Admin Console is the program you use to configure and manage your Resara Server. You can download the Admin Console for your computer by visiting the Downloads section of our website.

Install on Windows

Step 1: Go to <http://www.resara.com/index.php/downloads> and click the Download Now button in the Admin Console section.

Step 2: Run the installer .exe file.

Step 3: Complete the steps in the Setup Wizard



Important

The Admin Console requires installation of the free program Bonjour, which is the service our software uses to auto-discover the Resara Server on your network. You will be prompted to install this program during installation.

Step 3: Launch the Admin Console by clicking the Admin Console icon on your desktop, or from the Resara folder in your Start Menu. If your Resara Server has not already been configured, the Admin Console will automatically discover it on your network and allow you to configure your server. If your Resara Server has already been configured, it will automatically discover your server and domain. If not, you can enter the IP of the server into the Domain field of the login screen.

Install on Linux

Resara supports a generic Linux install for the Admin Console, or packages for Ubuntu 10.04.

Generic Install

Step 1: Go to <http://www.resara.com/index.php/downloads> and click the Download Now button in in the Admin Console section.

Step 2: Unzip the Admin Console file, and enter the extracted folder via the command line.

Step 3: Run the executable `rdsconsole.sh` by typing `./rdsconsole.sh` into the command line. If your Resara Server has not already been configured, the Admin Console will automatically discover it on your network and allow you to configure your server. If your Resara Server has already been configured, it will automatically discover your server and domain. If not, you can enter the IP of the server into the Domain field of the login screen.

Installing with Ubuntu 10.04 Packages

Step 1: Add the following lines to your `/etc/apt/sources.list` file

- `deb http://packages.resara.com/rds/stable lucid main`
- `deb-src http://packages.resara.com/rds/stable lucid main`

Step 2: Then run the following commands

- `sudo apt-key adv --keyserver keyserver.ubuntu.com --recv-keys 7BE5E6B2E7E5A4B3`
- `sudo apt-get update`
- `sudo apt-get install rdsconsole`

Step 3: You can run the Admin Console by running the command **rdsconsole**. If your Resara Server has not already been configured, the Admin Console will automatically discover it on your network and allow you to configure your server. If your Resara Server has already been configured, it will automatically discover your server and domain. If not, you can enter the IP of the server into the Domain field of the login screen.

Chapter 5. Troubleshooting

If the Admin Console cannot find the unconfigured server, then your VM may not be on the network or did not receive an IP via DHCP. If you do not have DHCP enabled on your network, run the configuration wizard within the VM interface by clicking on the Admin Console icon on the desktop. Then, you can configure your server's IP manually, and connect to it from your computer once the setup process has completed.

If the Admin Console does not discover your server after you have completed the setup wizard and manually set an IP, you may want to enter the IP of the Resara Server in the Domain section of the login window, using the Administrator username and password you set during the setup wizard. If this does not work, make sure your VM is configured to Bridged networking mode in your virtualization software.

You can drop to the command line on your VM and run the ping command by clicking on the console icon in the lower left of the task bar menu.

